

DWG NO ED-1009

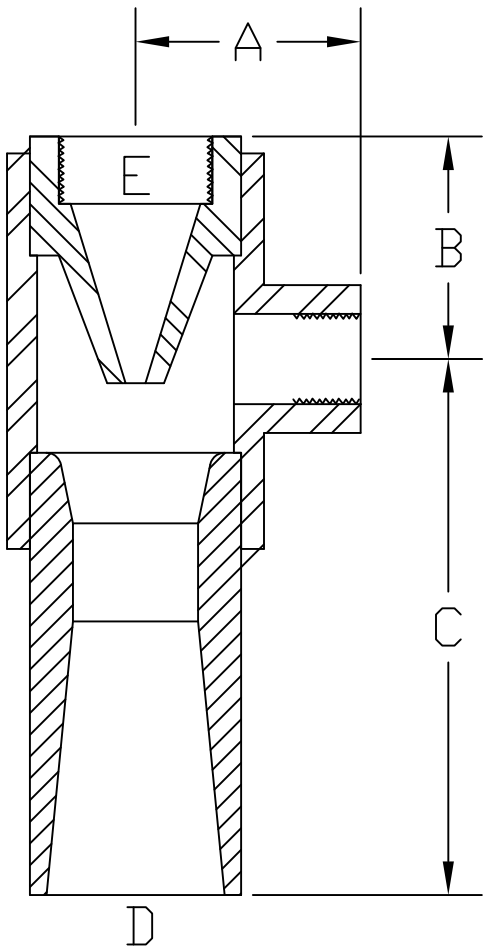
SH - REV -

REVISIONS

DESCRIPTION	DATE	APPROVED
-------------	------	----------

PART NUMBER EXAMPLE

P100-100-P-SN



PIPE DIA. (in)	CODE
1/2"	50
3/4"	75
1"	100
1-1/2"	150
2"	200
2-1/2"	250
3"	300

MATERIAL	CODE
PVC	P
CPVC	C
KYNAR	K
316L STAINLESS STEEL	S
HASTELLOY C-276	H

NOZZLE SIZE	CODE
SMALL	SN
MEDIUM	MN
LARGE	LN

Note 4.

NOTES:

1. Dimensions are for PVC & CPVC eductors only.
2. Threaded connections are NPT.
3. Flanged connections and special configurations are available.
4. Refer to P100 Liquid Jet Eductor Sizing Guide Doc. ED-106 for an explanation of Nozzle Size.

SERIES P100						
NOMINAL PIPE SIZE (in)	DIMENSIONS (in)					Weight (lbs)
	A	B	C	D	E	
1/2	1-3/8	1-1/2	3-7/16	1/2	3/8	1/2
3/4	1-3/4	1-7/8	5	3/4	1/2	1/2
1	1-7/8	2-1/8	6-1/4	1	3/4	3/4
1-1/2	2-7/16	2-5/8	9-3/4	1-1/2	1	1-1/2
2	2-3/4	3-1/8	12-1/2	2	1-1/2	2-1/2
2-1/2	3-5/16	3-5/8	15	2-1/2	2	4
3	3-3/4	4-1/8	18-11/16	3	2	7

UNLESS OTHERWISE SPECIFIED DIMENSIONS ARE IN INCHES DO NOT SCALE DRAWING DIMENSIONING AND TOLERANCING PER ASME Y14.5M-1994 AND APPLICABLE STANDARDS DECIMALS .XX ±.030 .XXX ±.010 ANGLES ±1° SURFACE ROUGHNESS 125 ✓ RUNOUT .010_TIR BREAK CORNERS .005-.015 INTERNAL RADII .015-.030	PROJECT NO.	-	INYO PROCESS		
	DRAWN	DG 2/12/07			
	CHECKED	EC 2/16/07	LIQUID JET EDUCTOR DIMENSIONS		
	DESIGN APPROVED	-			
	MFG. APPROVED	-	SIZE	CAGE CODE	DRAWING NO
QA APPROVED	-	A	-	ED-1009	-
RELEASE DATE	2/16/07	SCALE	WEIGHT	SHEET	
		-	-	-	