

MODEL NUMBER

IW - R - P - 4 - 3 - 3/4 - F - 180

WAFER STYLE

- FULL FACE FLANGE (F)
- RING STYLE (R)

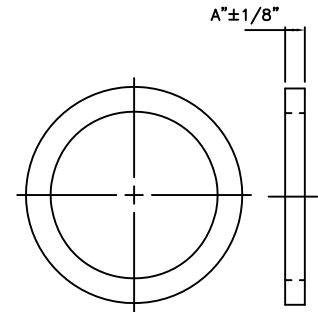
MATERIAL

SPOOL DIAMETER (IN)

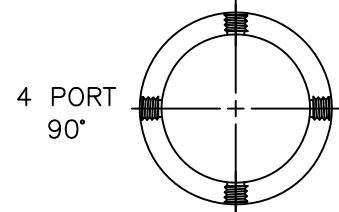
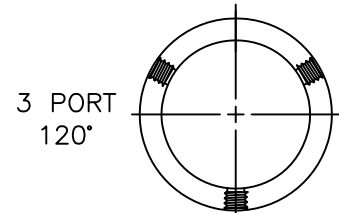
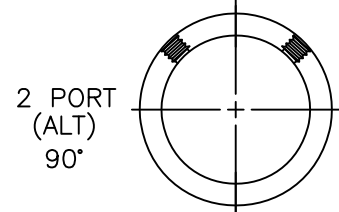
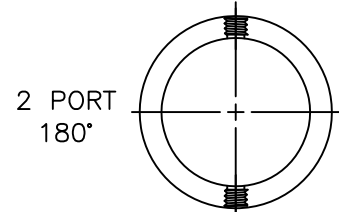
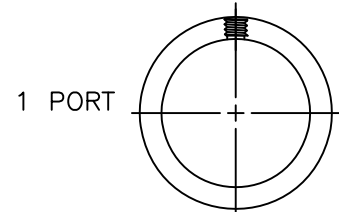
NUMBER OF PORTS

INJECTION PORT  
DIAMETER (IN)

FLANGED PORT (F)  
OR NPT THREADED (T)



TYPICAL CONFIGURATIONS



ANGLE OF SEPARATION BETWEEN PORTS

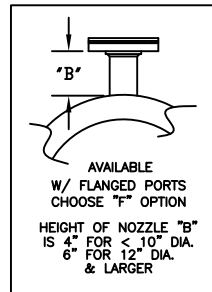
(LEAVE EMPTY IF ONLY ONE PORT)

- 2 PORTS IS TYPICALLY 180° OR 90°
- 3 PORTS IS TYPICALLY 120°
- 4 PORTS IS TYPICALLY 90°

150# & 125# CLASS ANSI FLANGE  
TABULATION BLOCK

LINE SIZE NPS	I.D. (in)	O.D. (in)	"A" THICKNESS (in)
3	3.07	5.13	1-1/2" THK FOR 1/2" PORT
4	4.03	6.63	
6	6.07	8.5	
8	7.98	10.75	
10	10.02	13.13	2" THK FOR 3/4" & 1" PORT
12	12	15.88	
14	13.25	17.51	
16	15.25	20.01	
18	17.25	21.38	
20	19.25	23.63	
24	23.25	28.00	

SYMBOL	MATERIAL	RATING
C	EPOXY LINED CARBON STEEL	240 PSIG/200°F
S	STAINLESS STEEL	240 PSIG/200°F
CP	CPVC	100 PSIG/165°F
P	PVC	150 PSIG/100°F



NOTES:

- 1" PORT SIZE REQUIRES A 2" THICK "A" WAFER
- LARGER DIAMETERS ARE AVAILABLE PLEASE CALL FACTORY
- CUSTOM CONFIGURATIONS ARE AVAILABLE
- ALSO AVAILABLE FOR DIN, AUSTRALIAN & BRITISH FLANGES
- CUSTOM SIZES AND CUSTOM PORT ARRANGEMENTS AVAILABLE. CALL FACTORY FOR PART NUMBERS
- AVAILABLE WITH MATCHING GASKETS IN ALL STANDARD MATERIALS INCLUDING: VITON NEOPRENE, BUNA, EPDM, TEFLON

UNLESS OTHERWISE SPECIFIED	PROJECT NO.	STANDARD	INYO PROCESS							
	DRAWN	RT								
DIMENSIONS ARE IN INCHES DO NOT SCALE DRAWING	CHECKED	ES	STANDARD INJECTION WAFER							
	DESIGN APPROVED	-								
	MFG. APPROVED	-								
	QA APPROVED	-								
	RELEASE DATE	9-11-11					SCALE	NTS	WEIGHT	SHEET
										1 OF 1

