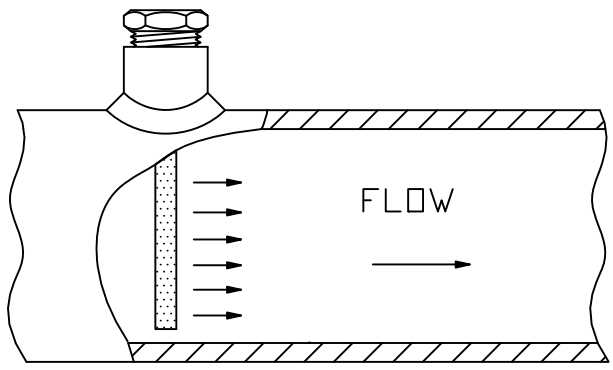
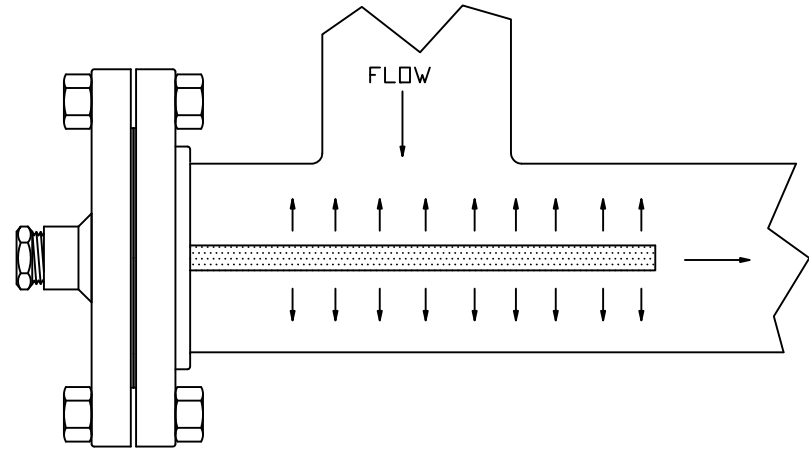


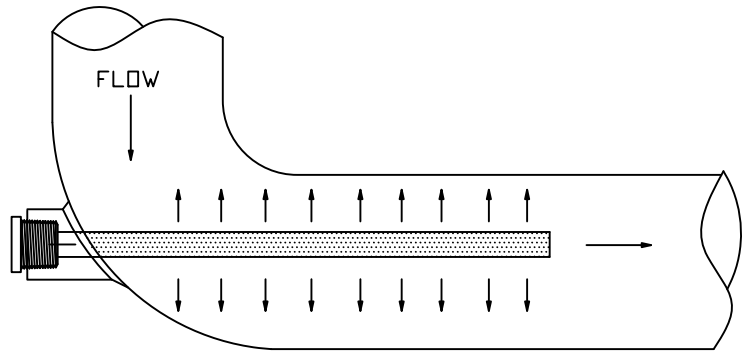
DWG NO SP-1001 SH - REV -



TANGENTIAL (FULL DIAMETER) MOUNTED



TEE MOUNTED



ELBOW MOUNTED

UNLESS OTHERWISE SPECIFIED		INYO PROCESS	
DIMENSIONS ARE IN INCHES DO NOT SCALE DRAWING		DRAWN DBA	
DIMENSIONING AND TOLERANCING PER ASME Y14.5M-1994 AND APPLICABLE STANDARDS		CHECKED ET	PIPELINE SPARGER CONFIGURATIONS INTRUSIVE (TANGENTIAL) SPARGING
DECIMALS .XX ±.030 .XXX ±.010	ANGLES ±1°	DESIGN APPROVED	SIZE A
	SURFACE ROUGHNESS 125 ✓	MFG. APPROVED	CAGE CODE -
RUNOUT .010_TIR		QA APPROVED	DRAWING NO SP-1001
BREAK CORNERS .005-.015		RELEASE DATE 7/25/2004	SCALE -
INTERNAL RADII .015-.030			WEIGHT -
			SHEET 1 OF 1
			REV -