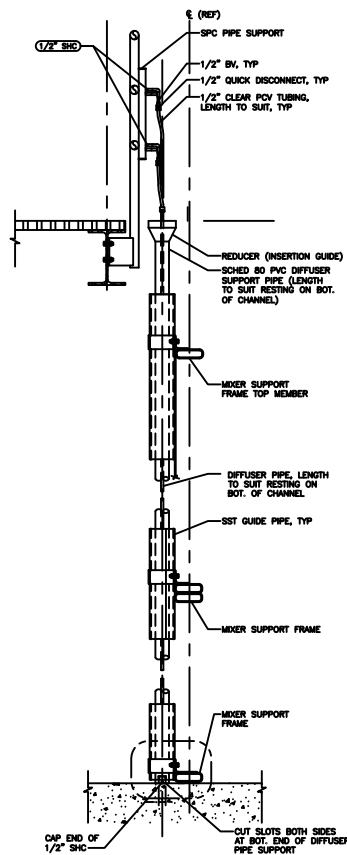
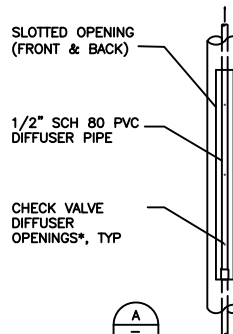
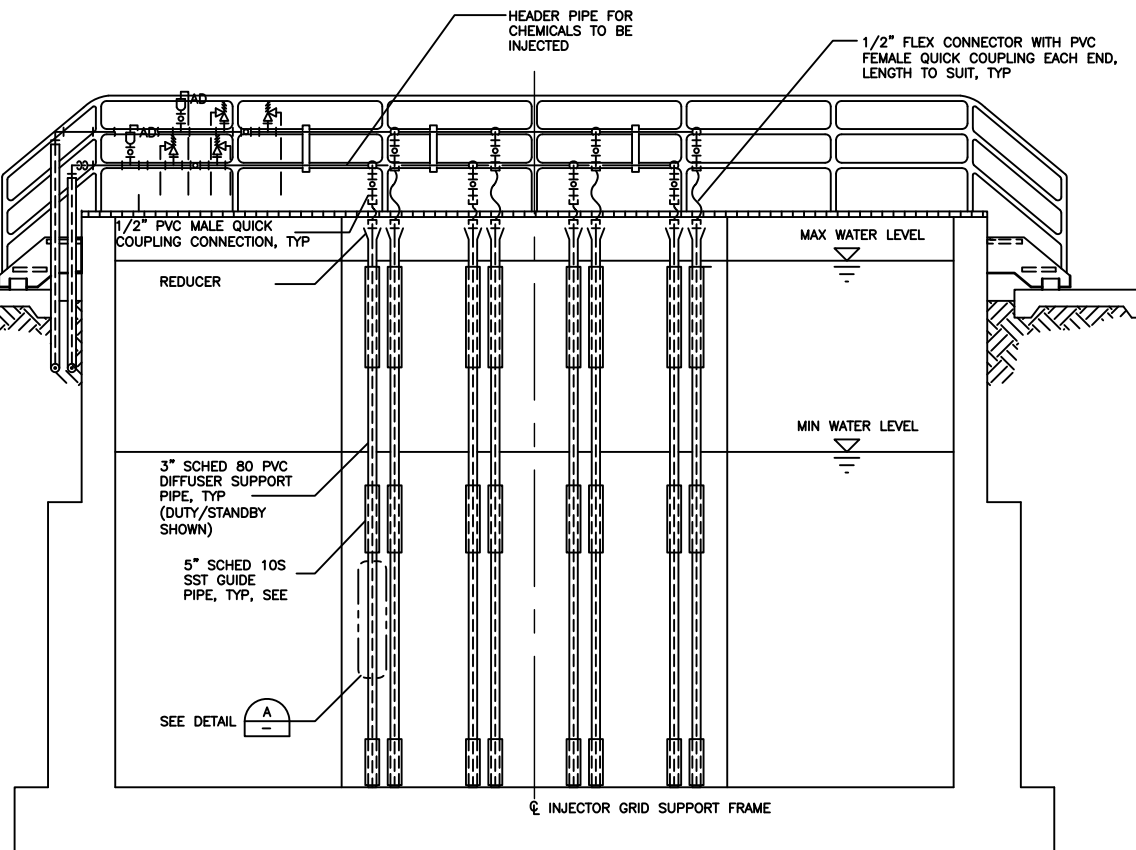


The drawings, specifications or descriptions contained herein, together with all information and know-how disclosed thereby, include technical data which is the exclusive property of Inyo Process LLC. No disclosure to others, either in the United States or abroad, or reproduction of any part of the information supplied is to be made, and no manufacture, sale or use of any device, process or composition of matter disclosed therein, whether patented or not, shall be made except by written authorization of Injectormart. This notice is not intended to nullify or limit rights granted by contract.

REVISIONS			
REV	DESCRIPTION	DATE	APPROVED
-	RELEASE PRODUCTION	06-25-99	D.K.M.



DETAIL B  
(NOT TO SCALE)



DETAIL A  
(NOT TO SCALE)

## NOTES:

1. DUTY/STANDBY CONFIGURATION SHOWN.
2. QUANTITY AND SPACING OF INJECTORS DEPENDENT ON CHEMICALS TO BE DIFFUSED AND FLOW VELOCITY.

UNLESS OTHERWISE NOTED		CONTR NO	-
DIMENSIONS ARE IN INCHES DO NOT SCALE THIS DRAWING		DRAWN	Q.VU 5/20/03
TOLERANCES		CHECKED	E.A. 5/20/03
.XX ± .030 ANGLES ± 1°		DWG APPROVED	D.K.M. 5/20/03
.XXX ± .010		DESIGN APPROVED	
BREAK CORNERS .005 TO .010		RELEASE DATE	5/20/03
INTERNAL RADII .005 TO .010		SCALE	NONE
DIMENSIONING IAW		HEIGHT	
ANSI Y14.5M 1982		SHEET	1 OF 1

INYO PROCESS  
TYPICAL  
CHANNEL INJECTOR SYSTEM

DWG NO CI-1000