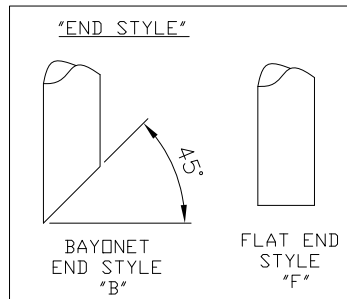
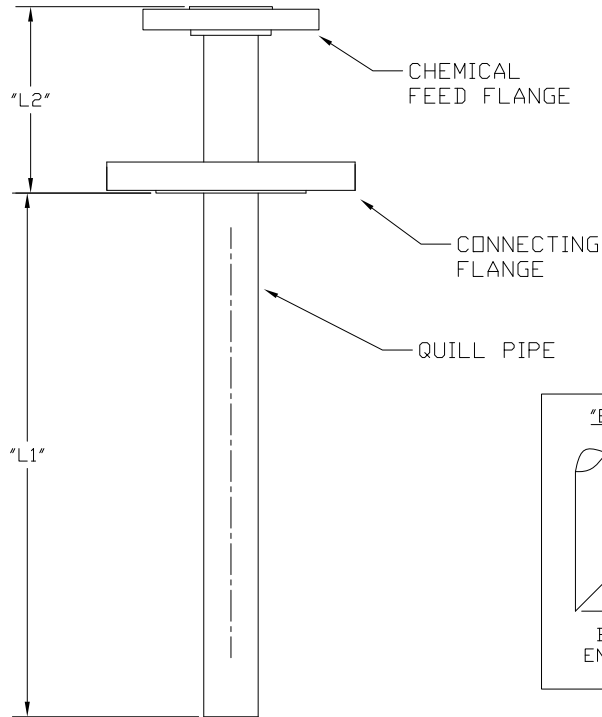


The drawings, specifications or descriptions contained herein, together with all information and know-how disclosed thereby, include technical data which is the exclusive property of Inyo Process. No disclosure to others, either in the United States or abroad, or reproduction of any part of the information supplied is to be made, and no manufacture, sale or use of any device, process or composition of matter disclosed therein, whether patented or not, shall be made except by written authorization of Inyo Process. This notice is not intended to nullify or limit rights granted by contract.

**NOTES:**

1. FLANGES ARE CONSIDERED TO BE RAISED FACE UNLESS THIS IS A CUSTOM CONFIGURATION.
2. THE OPTIONAL "CUSTOM" SUFFIX WILL BE USED TO CLARIFY: SPECIAL TESTING REQUIREMENTS, HIGH HUB ON BLIND FLANGE, OTHER TYPES OF FLANGE STYLES SUCH AS WELDNECK OR RTJ FACE, MIXED MATERIAL USAGE OR OTHER MODIFICATIONS THAT CANNOT BE REPRESENTED WITHIN THE PART NUMBER SYSTEM. A SEQUENTIAL NUMBER WILL BE ASSIGNED. AS A CUSTOM SUFFIX.



PART NUMBER EXAMPLE "DFL-150-3-1-1-S-6-12-B"

DFL-150-3-1-1-S-6-12-B-[CUSTOM]

CONNECTING FLANGE (DIA in)	CODE	CHEMICAL FEED FLANGE (DIA in)	CODE	QUILL PIPE DIA (in)	MATERIAL OF CONSTRUCTION	CODE	LENGTH OF QUILL "L1" (in)	HEIGHT OF FLANGE "L2" (in)	END STYLE	CODE
1/2"	1/2	1/2"	1/2	1/4	PVC	P	3	3	BAYONET	B
3/4"	3/4	3/4"	3/4	1/2	CPVC	C	4	4	FLAT	F
1"	1	1"	1	3/4	KYNAR	K	6	6		
1-1/2"	1.5	1-1/2"	1.5	1	316L S.S.	S	10	10		
2"	2	2"	2		HASTELLOY C-276	H	12			
3"	3	3"	3		TITANIUM	T	14			
4"	4	4"	4		DUPLEX 2205	D	16-36			
6"	6	6"	6		CARBON STEEL	CS				
					ALLOY 20	A				

UNLESS OTHERWISE SPECIFIED	PROJECT NO.	-			INYO PROCESS				
	DIMENSIONS ARE IN INCHES DO NOT SCALE DRAWING	DRAWN	DG 3-7-16						
DIMENSIONING AND TOLERANCING PER ASME Y14.5M-1994 AND APPLICABLE STANDARDS	CHECKED	-			DOUBLE FLANGED INJECTOR "DFL" SERIES				
	DESIGN APPROVED	-							
DECIMALS .XX ±.030 .XXX ±.010	MFG. APPROVED	-			SIZE A	DRAWING NO	DFL-1000	REV -	
	ANGLES ±1°	QA APPROVED	-						
SURFACE ROUGHNESS 125 ✓	RELEASE DATE	-			SCALE	-		SHEET	-
	RUNOUT .010_TIR								
BREAK CORNERS .005-.015									
INTERNAL RADI .015-.030									